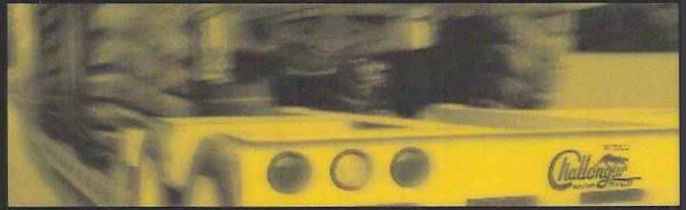
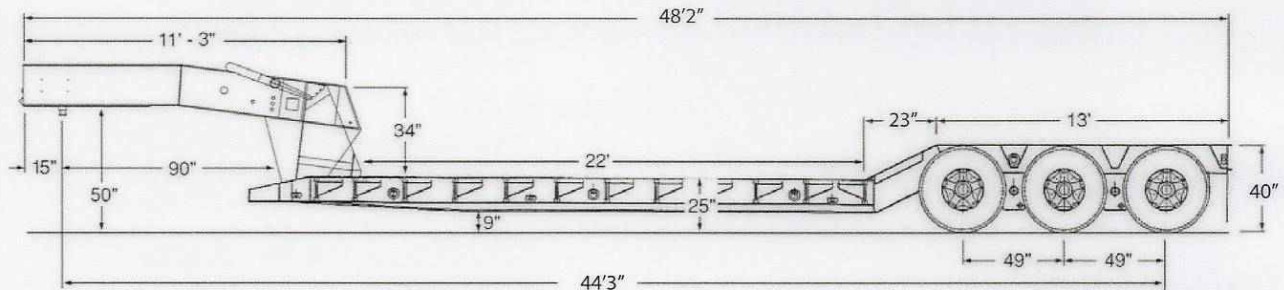


NGB Series NON GROUND BEARING



TRIPLE AXLE MODELS: NGB 50 AND NGB 60



STANDARD SERIES FEATURES

- 22' loadwell with 24 12" outriggers, 2" lumber decking & 3 "D" lashing rings
- 5" axles; 16-1/2" x 7" air brakes; unimount 10 stud
- High capacity spring suspension
- Self-contained hydraulic system w/electric start engine
- Visible 4 position ride adjustment with 2" increments
- 50 Ton - Twin 6" hydraulic cylinders
- 60 Ton - Twin 8" hydraulic cylinders
- Hydraulic operated neck support
- Air actuated safety lock
- Rubber-mounted lights
- Finished with industrial enamel over prime coat; color of your choice from our standard color selection
- Scraper neck and tapered front beam

SEE OPTIONS SECTION FOR
AVAILABLE OPTIONS

Model	Capacity	No of Axles	Deck Length	LOA
NGB 50	100,000#	3 each	22'	48'-2"
NGB 60	120,000#	3 each	22'	48'-2"

NOTES:



Rugged Durability, Performance, Value.

