



COVERED

FROM HEAD TO
SAFETY TOE

2018 ACCESSORIES CATALOG



DON'T CALL THEM ACCESSORIES. CALL THEM GEAR.

Before they walk out of the store with our boots,
let's make sure they've also been outfitted with
all the other equipment they need for necessary
protection and enhanced productivity.
They're not extras. They're essentials.



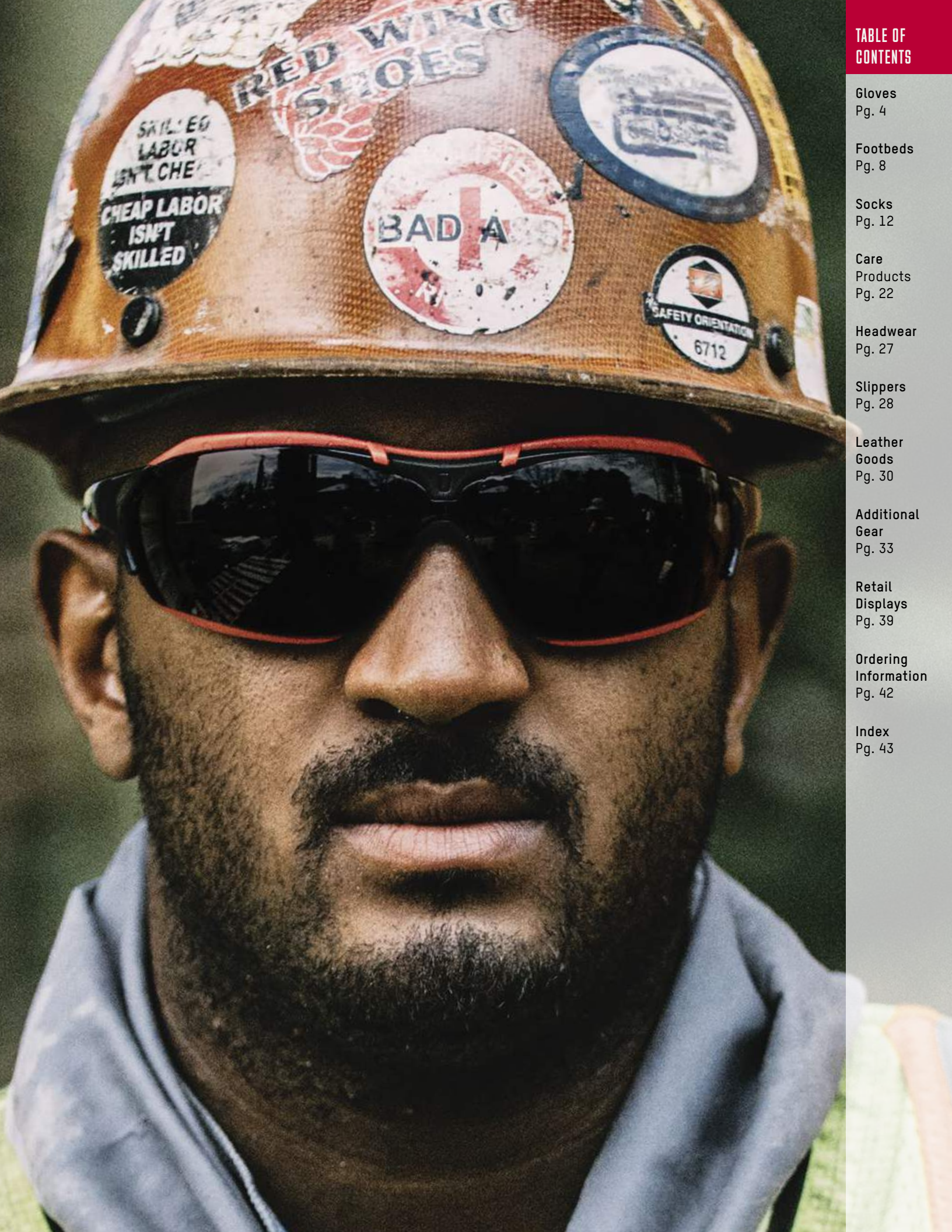


TABLE OF CONTENTS

Gloves
Pg. 4

Footbeds
Pg. 8

Socks
Pg. 12

Care
Products
Pg. 22

Headwear
Pg. 27

Slippers
Pg. 28

Leather
Goods
Pg. 30

Additional
Gear
Pg. 33

Retail
Displays
Pg. 39

Ordering
Information
Pg. 42

Index
Pg. 43

MORE HARDWORKING, PURPOSE-BUILT SAFETY GLOVE OPTIONS

LEATHER SERIES

THERMAL SERIES

MASTER SERIES



The **NEW** Red Wing gloves are designed and built with F3 Technology™ at its core with specific materials and purposeful designs.

FIT / FORM / FUNCTION

◦ BEST FIT

◦ MOST ANATOMICALLY CORRECT FORM

◦ UNSURPASSED FUNCTION

HANDLE SHARP OBJECTS WITH CONFIDENCE

Rugged goatskin leather offers superior durability and cut-resistance for the building, assembly, farming, utilities, municipal work and metal fabrication trades.



Cut Resistant



Reinforced Palm

LEATHER PRO 95257

NEW


- 01 – Premium goatskin grain leather for maximum durability and comfort
- 02 – Cut protection layer on palm with CE EN ISO13997 level F and ANSI/ISEA level A5 cut resistance
- 03 – Single full-palm construction for greater flexibility and dexterity
- 04 – Durable split cowhide leather patch on palm for high abrasion resistance
- 05 – Wing-thumb glove construction for maximum thumb flexibility.
- 06 – Reinforced wrap-around on index finger and patch on thumb saddle for extra durability.
- 07 – Kevlar stitching construction for durable structural integrity

SIZES SML, MED, LRG, XLG, XXL

UNIT 3 PAIR

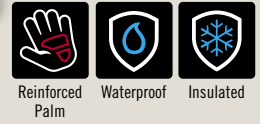
Made in **China**

THERMAL SERIES

Premium synthetic leather palm for durability
 PVC patches on palm and fingertips for better grip in wet conditions
 Touchscreen-compatible
 Woven ID label

SIZES
 SML, MED, LRG, XLG, XXL
 UNIT
 3 PAIR

Made in **China**



THERMAL FLEX 95253

- Elastic band with hook-and-loop rubber pull tab closure
- Laminated, water-resistant upper fabric keeps hands dry
- Fleece lined to provide warmth in cold conditions

THERMAL PRO 95255


- Elastic gaiter cuffs keep dust and debris away from hands
- Waterproof barrier and water-resistant upper fabric keeps hands dry
- 100g 3M™ Thinsulate™ insulation provides extra warmth in cold conditions

3M
Thinsulate
 INSULATION
 100 gram

pictured: Master Elite 95249

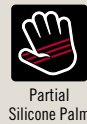


MASTER SERIES

Elastic band with hook and loop rubber pull tab closure
 Terry cloth thumb material to wipe away sweat
 High performance spandex material on top of hand for durability
 Touchscreen-compatible
 Woven ID label

SIZES
 SML, MED, LRG, XLG, XXL
 UNIT
 3 PAIR

Made in **China**



Partial
Silicone Palm

MASTER FLEX 95247

- Silicone print pattern on palm for enhanced grip.



Full
Silicone Palm

MASTER GRIP 95251

- Proprietary grip technology on palm for enhanced grip.



Reinforced
Palm TPR
Protection

MASTER PRO 95248

- Premium synthetic leather palm and patches for increased abrasion resistance
- Medium duty TPR (Thermoplastic Rubber) for impact protection on fingers



Padded
Palm Reinforced
Palm TPR
Protection

MASTER ELITE 95249

- Premium synthetic leather palm and patches for increased abrasion resistance
- PVC padded palm patch for enhanced grip and abrasion resistance
- Heavy duty TPR (Thermoplastic Rubber) for impact protection on fingers

FOOTBEDS

ORTHOTIC CATEGORY

COMFORT CATEGORY

ORIGINAL EQUIPMENT (OEM)

ORTHOTIC FOOTBEDS

ORTHOTIC | CUSTOM COMFORT MOLDABLE



96386: Black

Made in **Korea**

TOP LAYER: Moisture managing fabric cover

MID LAYER: Poron® middle layer, offering exceptional heel-to-toe support and provides maximum protection against shock

ARCH: Aggressive arch provides ultimate support and control

HEEL: Deep heel cup helps alignment upon heel strike

BASE: Variable density EVA base molds to your foot

Directions for use:

Simply heat the footbed in a regular oven, place it in the footwear, and step in for the perfect fit.

FOOTBED SIZES	MEN'S (SHOE SIZE)	WOMEN'S (SHOE SIZE)
3		4½-5
4		5½-6
5		6½-7
6	5½-6	7½-8
7	6½-7	8½-9
8	7½-8	9½-10
9	8½-9	10½-11
10	9½-10	11½-12
11	10½-11	13
12	11½-12	14
13	13	15
14	14	
15	15	
16	16	

ORTHOTIC | RW REVOLUTION



Powerstep

96323: Black

96336: WIDE Burgundy

Made in **USA**

TOP Friction reducing top coated fabric with anti-microbial agent to control odor

MID Resilient core foam and EVA sleeve for long lasting cushioning

HEEL Stabilizing heel cradle protects the heel during landing

BASE Therapeutic shell supports heel and arch

Wide fit accommodates EEE to 6E

FOOTBED SIZES	MEN'S (SHOE SIZE)	WOMEN'S (SHOE SIZE)
3		5-5½
4		6-6½
5		7-7½
6	6-6½	8-8½
7	7-7½	9-9½
8	8-8½	10
9	9-9½	11
10	10-10½	
11	11-11½	
12	12-13	
14	14	

ORTHOTIC FOOTBEDS

ORTHOTIC | EVA SPORT



96334

Made in **USA**

- TOP** Friction reducing top coated fabric with anti-microbial agent to control odor
- MID** Poron® cushion for shock absorption
- ARCH** Contoured arch provides support
- HEEL** Deep heel cup provides stability
- BASE** Lightweight EVA in Powerstep® mold

FOOTBED SIZES	MEN'S (SHOE SIZE)	WOMEN'S (SHOE SIZE)
6	6-6½	8-8½
7	7-7½	9-9½
8	8-8½	10
9	9-9½	11
10	10-10½	
11	11-11½	
12	12	
13	13	
14	14	

ORTHOTIC | MULTICORK WALKER



96335

Made in **USA**

- TOP** Friction reducing top coated fabric with anti-microbial agent to control odor
- MID** Poron® cushion for shock absorption
- ARCH** Contoured arch provides support
- HEEL** Deep heel cup provides stability
- BASE** Dense multicork base in Powerstep® mold

FOOTBED SIZES	MEN'S (SHOE SIZE)	WOMEN'S (SHOE SIZE)
6	6-6½	8-8½
7	7-7½	9-9½
8	8-8½	10
9	9-9½	11
10	10-10½	
11	11-11½	
12	12	
13	13	
14	14	

COMFORT FOOTBEDS

COMFORT SERIES | MEMORY FOAM COMFORTFORCE®

NEW

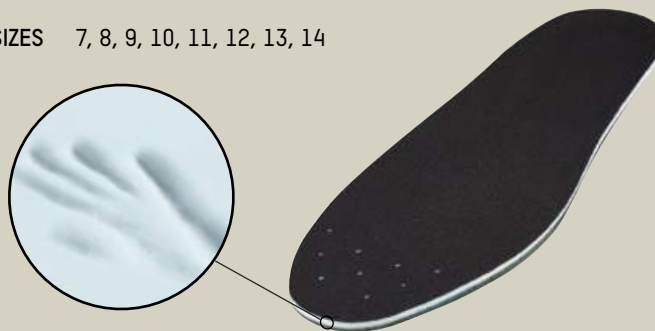


96365

Made in **USA**

- TOP** Anti-microbial top fabric reduces heat and friction and helps control odor.
- MID** Plush memory foam conforms to the shape of the foot for added comfort and pressure relief
- ARCH** Comfort curved ribbed arch lift
- HEEL** Heel cup channels for ventilation
- BASE** CFP-5 shock attenuating elastomer pad

SIZES 7, 8, 9, 10, 11, 12, 13, 14



Plush memory foam conforms to the shape of the foot for added comfort and pressure relief.

GLOVES

FOOTBEDS

SOCKS

CARE PRODUCTS

HEADWEAR

SLIPPERS

LEATHER GOODS

ADDITIONAL GEAR

RETAIL DISPLAYS

ORDERING

INDEX

COMFORT FOOTBEDS (CONTINUED)

COMFORT | FLAT COMFORT



96327

TOP Friction reducing top coated fabric with anti-microbial agent to control odor

MID Impact Poron® cushioning for improved shock attenuation

SIZES 6, 8, 10, 12, 14

Made in **USA**

COMFORT | TOTAL CONTACT



96322

Extremely lightweight and comfortable

SIZES: 6, 8, 10, 12, 14

Made in **USA**

ORIGINAL EQUIPMENT (OEM) FOOTBEDS

ORIGINAL EQUIPMENT | REDBED



96388

Four-layer construction for moisture management, impact absorption, stabilization and cushioned comfort.

Ventilating perforations

Wrap-around motion stabilizer

TOP Moisture-managing fabric cover

MID Impact-absorbing urethane foam

ARCH Inner longitudinal arch support

HEEL Heel strike gel elastomer cushion pad

SIZES 6, 7, 8, 9, 10, 11, 12, 13, 14, 15

Made in **China**

ORIGINAL EQUIPMENT | QUADREX



96358

TOP Red Wing Microfiber

MID Instant comfort underfoot

ARCH Molded arch protection

HEEL Gel pad enhances heel strike

BASE Polyurethane base provides durability

SIZES D: 8, 8½, 9, 9½, 10, 10½, 11, 11½, 12, 13

EE: 9, 9½, 10, 10½, 11, 11½, 12

Made in **China**

ORIGINAL EQUIPMENT | COMFORTFORCE® (LG)



96368: Loden Green

Unique Venturi Air perfs for air exchange
Used in soft toe styles

TOP Weave pattern to facilitate energy wave caused during walking

MID Shock absorbing urethane

ARCH Comfort curved ribbed arch lift

HEEL Heel cup channels for ventilation

BASE CFP-5 shock attenuating elastomer pad

SIZES 8, 9, 10, 11, 12, 13, 14

Made in **USA**

ORIGINAL EQUIPMENT | COMFORTFORCE® (BS)



96369: Burnt Sienna

Unique Venturi Air perfs for air exchange
Used in safety toe styles

TOP Weave pattern to facilitate energy wave caused during walking

MID Shock absorbing urethane

ARCH Comfort curved ribbed arch lift

HEEL Heel cup channels for ventilation

BASE CFP-5 shock attenuating elastomer pad

SIZES 5, 6, 7, 8, 9, 10, 11, 12, 13, 14, 16

Made in **USA**

ORIGINAL EQUIPMENT (OEM) FOOTBEDS

GLOVES

FOOTBEDS

SOCKS

CARE PRODUCTS

HEADWEAR

SLIPPERS

LEATHER GOODS

ADDITIONAL GEAR

RETAIL DISPLAYS

ORDERING

INDEX

ORIGINAL EQUIPMENT | EAGLE KING TOE®



- 96347**
- TOP** Nylon fabric lining for increased durability
 - MID** Poron® 4000 middle layer reduces shock and will not break down
 - ARCH** Contoured arch lift for added comfort
 - HEEL** Molded heel cup stabilizes the foot
 - BASE** Polyurethane bottom supports the foot
 - SIZES** 7, 8, 9, 10, 11, 12, 13, 14, 15

Made in **China**

ORIGINAL EQUIPMENT | EAGLE



- 96339**
- TOP** Polypropylene lining keeps feet dry all day
 - MID** Poron® 4000 middle layer won't break down
 - BASE** Urethane bottom supports the foot
 - SIZES** 8, 10, 12, 14

Made in **USA**

ORIGINAL EQUIPMENT | POLYURETHANE



- 96324**
- TOP** Durable nylon fabric lining
 - MID** Shock absorbing polyurethane
 - ARCH** Contoured arch provides support
 - HEEL** Heel cup provides stability
 - SIZES** 6, 7, 8, 9, 10, 11, 12, 13, 14, 15

Made in **China**

ORIGINAL EQUIPMENT | KING TOE®



- 96325**
- TOP** Durable nylon fabric lining
 - MID** Shock absorbing polyurethane
 - ARCH** Contoured arch lift provides comfort
 - HEEL** Heel cup provides stability
 - BASE** Polyurethane bottom supports the foot
 - SIZES** 6, 7, 8, 9, 10, 11, 12, 13, 14, 15, 16

Made in **China**

ORIGINAL EQUIPMENT | POLYURETHANE SD



- 96326**
- TOP** Durable nylon fabric lining
 - MID** Shock absorbing polyurethane
 - ARCH** Contoured arch lift provides comfort
 - HEEL** Heel cup provides stability
- *Will not make a non-SD shoe SD*
- SIZES** 6, 7, 8, 9, 10, 11, 12, 13, 14, 15

Made in **China**

ORIGINAL EQUIPMENT | FOAMTECH™ SD



- 96381**
- Breathable static-dissipative footbed (Will not make a non-SD shoe SD)
- TOP** Brushed polyester
 - HEEL** Heel cup provides stability
 - MID/BASE** Open cell polyurethane and SD material composed of polyester and conductive fibers.
 - SIZES** 8, 10, 12, 14

Made in **USA**

AN EXPANDED COLLECTION OF PURPOSE-BUILT SOCKS

SOCKS

WOOL

NEW! PERFORMANCE BLEND

ACRYLIC

COTTON

SPECIALTY FABRICS

WOOL SOCKS

WOOL | MERINO SAFETY TOE CREW / QUARTER CREW

Made in **USA**



97287 (featured): Brown

- 01 – **MERINO WOOL:** extra soft and naturally absorbent, keeps feet comfortable and dry
- 02 – **WIDE TOP BAND:** provides comfort and keeps socks in place
- 03 – **FIBER TECHNOLOGY:** pulls moisture away from the foot so remains dry and cool
- 04 – **ARCH AND ANKLE SUPPORT PANEL:** promotes circulation and reduces fatigue
- 05 – **EXTRA CUSHIONING:** ensures comfort over safety toe area
- 06 – **FLAT-KNIT TOE SEAM:** provides comfort
- 07 – **NYLON REINFORCED AND EXTENDED HEEL/TOE:** for added durability
- 08 – **VENTED KNIT IN AIR PANEL:** helps socks breathe



97291: Black

97292: Brown

97293: Charcoal / Olive

97286: Black

97287: Brown

97294: Charcoal / Olive



Crew
Full Cushion



Qtr Crew
Full Cushion

CONTENT: **Crew:** 77% Merino wool, 22% Nylon, 1% Lycra® Spandex
Quarter: 65% Merino wool, 34% Nylon, 1% Lycra® Spandex

UNIT: 6 pair

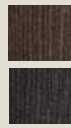
SIZES: 3-6, 6-9, 9-12, 12-16

**LIFETIME
WARRANTY**

See page 42 for details

WOOL SOCKS

WOOL | MERINO WOOL CASUAL



97275: Black, 97277: Brown,
97278: Charcoal

CONTENT 33% Merino Wool, 32% Nylon,
33% Polyester, 2% Lycra® Spandex

UNIT 6 pair

SIZES 6-9, 9-12, 12-16

Made in **USA**



Moisture wicking



Arch support panel



Crew Half Cushion

WOOL | MERINO LIGHT CREW



97352: Brown, 97353: Navy,
97354: Charcoal

CONTENT 78% Merino Wool, 20% Nylon,
2% Lycra® Spandex

UNIT 6 pair

SIZES 6-9, 9-12, 12-16

Made in **USA**



Arch support panel



Moisture wicking



Reinforced heel/toe



Crew Half Cushion

WOOL | MERINO MEDIUM CREW



97325: Brown, 97326: Olive,
97329: Charcoal, 97328: Navy,
97327: Taupe

CONTENT 80% Merino Wool, 18% Nylon,
2% Lycra® Spandex

UNIT 6 pair

SIZES 6-9, 9-12, 12-16

Made in **USA**



Mesh panels for air circulation



Moisture wicking



Reinforced heel/toe



Crew Full Cushion

WOOL | NARROW RIB HIKER



97355: Charcoal

CONTENT 53% Merino Wool, 26% Acrylic,
19% Nylon, 2% Lycra® Spandex

UNIT 6 pair

SIZES 6-9, 9-12, 12-16

Made in **USA**



Arch support panel



Moisture wicking



Reinforced heel/toe



Crew Full Cushion

WOOL | ECP™ MERINO WOOL



97320: Charcoal, 97321: Green

CONTENT 52% Merino Wool, 40% Acrylic,
8% Stretch Nylon

UNIT 6 pair

SIZES 9-12, 12-16

Made in **USA**



Extreme cold protection



Moisture wicking



Loop toe seam



Crew Full Cushion

WOOL | DELUXE WOOL CREW



97312: Natural, 97313: Black

CONTENT 90% Worsted Wool,
10% Stretch Nylon

UNIT 6 pair

SIZES 6-9, 9-12, 12-16

Made in **USA**



Excellent for cooler temps



Reinforced heel/toe



Safety toe cushion



Crew Half Cushion

WOOL SOCKS

GLOVES

FOOTBEDS

SOCKS

CARE PRODUCTS

HEADWEAR

SLEPPERS

LEATHER GOODS

ADDITIONAL GEAR

RETAIL DISPLAYS

ORDERING

INDEX

WOOL | ARCTIC

97200: Multi
CONTENT 84% Wool, 9% Acrylic, 5% Nylon, 2% Lycra® Spandex
UNIT 6 pair
SIZES 9-12, 12-16

Made in **USA**



- Cushioned warmth
- Large loops for softness
- Flat-knit toe seam
- Mid Calf Full Cushion

WOOL | DUO THERM

97220: Gray / Red
CONTENT 85% Worsted Wool, 15% Stretch Nylon
UNIT 6 pair
SIZES 9-12, 12-16

Made in **USA**



- Cushioned warmth
- Flat-knit toe seam
- Reinforced heel/toe
- Mid Calf Full Cushion

WOOL | CLASSIC MERINO

97392: Burgundy / Taupe
CONTENT 70% Wool, 30% Nylon
UNIT 6 pair
SIZES 6-9, 9-12, 12-16

Made in **New Zealand**



- Arch support panel
- Wide top band
- Mid Calf Full Cushion

WOOL | TRAIL LOW CUT AND QUARTER CREW

97356: Low cut, Natural

97357: Quarter Crew, Natural

CONTENT 30% Merino Wool, 18% Acrylic, 12% Polyester, 38% Nylon, 2% Lycra® Spandex

UNIT 6 pair

SIZES 6-9, 9-12, 12-16

Made in **USA**



- Mesh panels for air circulation
- Moisture wicking
- Reinforced heel/toe
- Arch support panel
- Low cut half cushion
- Quarter crew half cushion

WOVEN TO PERFORM

The new Performance Crew combines the softness and high absorption of cotton with the strength and quick-drying properties of polyester, taking comfort and durability to a new level.



97267 (featured): Black Crew

97259: White Crew

PERFORMANCE BLENDS | PERFORMANCE WORK CREW

NEW

- 01 – **VENTED KNIT IN AIR PANEL** runs the full length of the sock and promotes added breathability
- 02 – **EXTRA CUSHIONING** Fully cushioned plus additional padding on heel, shin and calf to help with impact protection
- 03 – **ARCH SUPPORT PANEL** promotes circulation and reduces foot fatigue
- 04 – **SEAMLESS TOE** provides comfort
- 05 – **SUPREME MOISTURE MANAGEMENT SYSTEM** The blend of polyester and cotton quickly moves moisture away from your skin and naturally absorbs
- 06 – **NYLON REINFORCED HEEL/TOE** for added durability



Crew Full Cushion

CONTENT: 67% Polyester, 17% Cotton, 15% Nylon, 1% Lycra® Spandex

UNIT: 6 Pair

SIZES: 3-6, 6-9, 9-12, 12-16

Made in **USA**



ACRYLIC SOCKS

ACRYLIC | SAFETY TOE CREW AND QUARTER CREW

Made in **USA**



97297 (featured): Natural / Brown

- 01 – WIDE TOP BAND: provides comfort and keeps socks in place
- 02 – FIBER TECHNOLOGY: pulls moisture away from the foot so remains dry and cool.
- 03 – ARCH AND ANKLE SUPPORT PANEL: promotes circulation and reduces fatigue.
- 04 – EXTRA CUSHIONING: ensures comfort over safety toe area
- 05 – SEAMLESS TOE SEAM: reduces bulk and provides great comfort.
- 06 – NYLON REINFORCED AND EXTENDED HEEL/TOE: for added durability

LIFETIME WARRANTY

See page 42 for details



Crew Half Cushion



Qtr Crew Half Cushion

CONTENT: 57% Acrylic, 20% Merino Wool, 15% Nylon, 7% Polyester, 1% Lycra®

UNIT: 6 pair

SIZES: 3-6, 6-9, 9-12, 12-16



97289: Gray/Red



97298: Black



97297: Natural/Brown



97204: Gray/Red



97206: Natural/Brown



97231: Black

ACRYLIC SOCKS

ACRYLIC | MOISTURE WICK CREW AND QUARTER CREW



97310 (featured): Black

- 01 – WIDE TOP BAND: provides comfort and keeps socks in place
- 02 – FIBER TECHNOLOGY: pulls moisture away from the foot so remains dry and cool.
- 03 – FLAT KNIT TOE SEAM: provides comfort.



97311: Quarter Crew, Black



Crew Full Cushion

Qtr Crew Full Cushion

CONTENT: 60% Acrylic, 22% Cotton, 15% Nylon,
3% Lycra® Spandex

UNIT: 6 pair SIZES: 6-9, 9-12, 12-16

Made in **USA**

ACRYLIC | WORK THERMAL

97290: Gray / Black

CONTENT 50% Acrylic, 30% Wool,
20% Stretch Nylon

UNIT 6 pair

SIZES 6-9, 9-12, 12-16

Made in **USA**



Moisture wicking



Large loops for softness



Flat-knit toe seam



Crew Full Cushion

ACRYLIC | CLIMATE CONTROL COLD

97208: Gray

CONTENT 50% Duraspun® Acrylic,
24% Wool, 20% Stretch Nylon, 5% Silk,
1% Lycra® Spandex

UNIT 6 pair

SIZES 6-9, 9-12, 12-16

Made in **USA**



Moisture wicking



Large loops for softness



Flat-knit toe seam



Crew 3/4 Cushion

ACRYLIC SOCKS

GLOVES

FOOTBEDS

SOCKS

CARE PRODUCTS

HEADWEAR

SLIPPERS

LEATHER GOODS

ADDITIONAL GEAR

RETAIL DISPLAYS

ORDERING

INDEX

ACRYLIC | WICK DRY CREW AND QUARTER CREW



97315 (featured): Crew, Natural

- 01 – WIDE TOP BAND: provides comfort and keeps socks in place
- 02 – FIBER TECHNOLOGY: pulls moisture away from the foot so remains dry and cool.
- 03 – LOOP TOE SEAM: feels virtually seamless for best comfort.



97316: Quarter Crew, Natural



Crew Foot Cushion



Qtr Crew Foot Cushion

CONTENT: 68% Duraspun® Acrylic, 18% Nylon, 13% Cotton, 1% Lycra® Spandex

UNIT: 6 pair

SIZES: 6-9, 9-12, 12-16

Made in **USA**

ACRYLIC | DRI FOOT



97222: White / Burgundy

CONTENT 80% Hi-Bulk Acrylic, 10% Cotton, 10% Stretch Nylon

UNIT 6 pair

SIZES 6-9, 9-12, 12-16

Made in **USA**



Moisture wicking



Large loops for softness



Reinforced heel/toe



Mid Calf Full Cushion



Flat Toe Seam

ACRYLIC | EAGLE POLYWICK



97224: Gray / Burgundy

CONTENT 68% Acrylic, 17% Wool, 14% Nylon, 1% Lycra® Spandex

UNIT 6 pair

SIZES 6-9, 9-12, 12-16

Made in **USA**



Moisture wicking



Large loops for softness



Reinforced heel/toe



Mid Calf Full Cushion



Flat Toe Seam

COTTON SOCKS

COTTON | COTTON WORK LOW CUT, QUARTER CREW, CREW, OVER-THE-CALF

NEW



97266 (featured): Black

Made in **USA**

- 01 – WIDE TOP BAND provides comfort and keeps sock in place
- 02 – COMBED RING SPUN FULL CUSHION from top to toe for comfort
- 03 – ARCH AND ANKLE SUPPORT PANEL promotes circulation and reduces foot fatigue
- 04 – ANTIMICROBIAL WASH OR PROPERTIES keeps odors neutralized
- 05 – FLAT-KNIT TOE SEAM provides comfort

CONTENT: 75% cotton, 22% nylon, 2% Spandex®, 1% polyester

UNIT 97261, 97262, 97263, 97264, 97265, 97266, 97273 97274: 6 Pair
97268, 97269: (Crew 6 pair bulk pack): 12 half dozen

SIZES 97261, 97262, 97263, 97264: (Low cut, Qtr Crew) 3-6, 6-9, 9-12, 12-16
97265, 97266: (Crew) 3-6, 6-9, 9-12, 12-16
97273, 97274: (Over-the-calf) 6-9, 9-12, 12-16
97268, 97269: (Crew bulk pack) 6-9, 9-12, 12-16



97261: White Low Cut

97262: Black Low Cut



97263: White Qtr Crew

97264: Black Qtr Crew



97265: White Crew

97268: Bulk Crew White

97266: Black Crew

97269: Bulk Crew Black



97274: White Over-the-Calf

97273: Black Over-the-Calf

SPECIALTY SOCKS

SPECIALTY | ULTIMATE DIABETIC



97230: White, **97232:** Black
CONTENT 60% CoolMax®, 30% Nylon, 5% Polyester, 4% X-Static®, 1% Lycra® 3D™
UNIT 6 pair
SIZES 6-9, 9-12, 12-16

Made in **USA**

COOLMAX® Technology **X-static** THE SILVER FIBER

- Moisture wicking
- Promotes health
- Wide top band
- Crew Half Cushion

SPECIALTY | COOLMAX® QUARTER

97317: White
CONTENT 81% CoolMax® Polyester, 17% Nylon, 2% Lycra® Spandex
UNIT 6 pair
SIZES 6-9, 9-12, 12-16

Made in **USA**

COOLMAX® Technology

- Mesh panels for air circulation
- Moisture wicking
- Arch support panel
- Quarter Crew Half Cushion

SPECIALTY | COOLMAX® LINERS



97247: White
CONTENT 93% CoolMax® Polyester, 6% Nylon, 1% Lycra® Spandex
UNIT 12 pair
SIZES 6-9, 9-12, 12-16

Made in **USA**

COOLMAX® Technology

- Layer for warmth
- Moisture wicking
- Flat-knit toe seam
- Crew Non Cushion

SPECIALTY SOCK TECHNOLOGY




X-Static® fibers have a layer of pure silver permanently bonded to the surface of a textile fiber. It's anti-microbial, eliminates odor and regulates temperature.



Coolmax® possesses a unique four-channel construction with 20% more surface area than other moisture-wicking materials. This allows the fibers to quickly pull moisture away so perspiration evaporates faster and feet stay cool.


SOCK INFORMATION

HEIGHTS



ankle ¼ crew crew mid-calf over-the-calf

CUSHIONING

Placement of the extra cushioning in the sock is noted by the dark gray → 

SOCK SIZE CHART

Men's	Women's
3-6	4-6.5
6-9	7-10
9-12	10-13
12-15	N/A

GLOVES
 FOOTBEDS
 SOCKS
 CARE PRODUCTS
 HEADWEAR
 SLIPPERS
 LEATHER GOODS
 ADDITIONAL GEAR
 RETAIL DISPLAYS
 ORDERING
 INDEX

CARE PRODUCTS

BEFORE AFTER

RED WING OFFERS SOLUTIONS TO EXTEND THE LIFE OF YOUR BOOTS.

Your favorite boots are like the engine of a prized vehicle. Take proper care of them, provide the right maintenance, and they'll deliver superior performance down the road. Clean, condition, protect and repeat is the ideal plan of action to keep boots soft, supple,

looking great and performing at their best. So when it comes to the crucial products in this maintenance and revitalizing routine, trust Red Wing. They're here to help every step of the way.

A LITTLE CARE GOES A LONG WAY - JUST 3 EASY STEPS!



STEP 1 **CLEAN**



STEP 2 **CONDITION**



STEP 3 **PROTECT**

CLEAN

CLEAN | ESSENTIAL LEATHER CLEANER



95139

UNIT (24) 3 oz bottles with brush applicator

- Softens and lubricates
- Extends life of leather
- Protects and preserves leather

Made in **USA**

SAFE FOR:

✓ OIL-TANNED	SUEDE/NUBUCK
✓ DRY-TANNED	✓ WATERPROOF

CLEAN | ESSENTIAL SADDLE SOAP



95136

UNIT (12) 3 oz tins

- Cleans and softens leather
- Renews appearance
- Maintains strength

Made in **USA**

SAFE FOR:

✓ OIL-TANNED	SUEDE/NUBUCK
✓ DRY-TANNED	WATERPROOF

CLEAN | ESSENTIAL SUEDE/NUBUCK KIT



95166

UNIT 12 per case

- Includes brush and suede bar
- Will not change color or texture of suede

Made in **USA**

SAFE FOR:

OIL-TANNED	✓ SUEDE/NUBUCK
DRY-TANNED	WATERPROOF

GLOVES

FOOTBEDS

SOCKS

CARE PRODUCTS

HEADWEAR

SLEPPERS

LEATHER GOODS

ADDITIONAL GEAR

RETAIL DISPLAYS

ORDERING

INDEX

CONDITION

CONDITION | NATURSEAL™ LIQUID AND PASTE FORMULAS

Naturseal™

Uses breakthrough technology to penetrate waterproof leather, enhancing breathability and pliability.

Made in **USA**



A



B



C



D



E



F

- A 95146** Liquid
UNIT 1 gallon container
- B 95147** Liquid
UNIT (12) 8 oz bottles
- C 95144** Liquid
UNIT (24) 4 oz bottles

- D 95148** Paste
UNIT (12) 8 oz containers
- E 95145** Paste
UNIT (24) 4 oz containers
- F 95153** Liquid refill bottle (empty)
UNIT (12) 16 oz container

SAFE FOR:

✓ OIL-TANNED	✓ SUEDE/NUBUCK
✓ DRY-TANNED	✓ WATERPROOF

Some darkening of leather will occur. Will darken and flatten the nap on suede leather. For fine leathers, try on a hidden spot first.

CONDITION | THE ORIGINAL BOOT OIL AND PASTE

The **ORIGINAL**

This tried-and-true formula restores leather to its natural softness and flexibility. It lubricates and preserves leather quality while adding water repellency.

Made in **USA**



G



H



I



J



K



L



M

- G 95150** Oil
UNIT 1 gallon container
- H 95151** Oil
UNIT (12) 32 oz containers
- I 95130** Oil
UNIT (24) 8 oz bottles

- J 95154** Paste
UNIT (24) 3 oz tins **NEW SIZE**
- K 95126** Black paste
UNIT (24) 3 oz tins
- L 95152** Oil refill bottle (empty)
UNIT (12) 16 oz containers
- M 95137** Oil trial size
UNIT (50) .24 oz packets

SAFE FOR:

✓ OIL-TANNED	SUEDE/NUBUCK
✓ DRY-TANNED	WATERPROOF

CONDITION | THE ORIGINAL MINK OIL PASTE

Trusted silicone and lanolin formula softens leather while adding water repellency.

Made in **USA**



N



O



P

- N 95157** Paste
UNIT (1) 32 oz containers
- O 95160** Paste
UNIT (24) 3 oz tin

- P 95138** Paste trial size
UNIT (50) .24 oz packets

SAFE FOR:

✓ OIL-TANNED	SUEDE/NUBUCK
✓ DRY-TANNED	WATERPROOF

CONDITION | ALL NATURAL BOOT OIL AND PASTE FORMULAS

All Natural

All Natural conditioning products include a proprietary mixture of mink oil, pine pitch and beeswax. Designed to protect and extend the life of oil-tanned leather, these products offer an all-natural, non-chemical makeup.

Made in **USA**



Q 95132 Oil
UNIT (12) 8 oz containers

R 95167 Paste
(formerly known as All Natural Leather Dressing)
UNIT (12) 3 oz tin **NEW SIZE**

SAFE FOR:

✓ OIL-TANNED	SUEDE/NUBUCK
✓ DRY-TANNED	WATERPROOF

CONDITION | ESSENTIAL BOOT POLISH

Made in **USA**



95178 Brown
UNIT (12) 1.55 oz jars

SAFE FOR:

OIL-TANNED	SUEDE/NUBUCK
✓ DRY-TANNED	WATERPROOF

95170 Black	95171 Dusky Brown	95172 Medium	95174 Burgundy
95177 Neutral	95178 Brown	95179 Red Mahogany	95181 London Tan (ORO)

CONDITION | ESSENTIAL PASTE WAX

Made in **USA**



S 95131 Brown
UNIT (12) 3 oz tins

T 95127 Black
UNIT (12) 3 oz tins

Renews leather with shine and aids in water repellency.

SAFE FOR:

OIL-TANNED	SUEDE/NUBUCK
✓ DRY-TANNED	WATERPROOF

CONDITION | POLISH BRUSH AND DAUBER



U 95165 Dauber (Sized to fit polish jar)
UNIT (24) 4" L x 1½" W

Made in **USA**

V 95164 Brush
UNIT (12) 6" L x 2" W

Made in **Israel**

Premium 100% natural horsehair brush and polish dauber ensure a deep and even finish when applying conditioning products. It could also be used for light-duty cleaning.

PROTECTION

PROTECTION | ESSENTIAL LEATHER PROTECTOR



95162

UNIT (12) 4 oz containers

- Creates an invisible shield for protection of leather and fabric.
- Seals out water, stains and dirt
- Makes leather easier to clean
- Will not darken or change color of leather

Made in **USA**

SAFE FOR:

✓ OIL-TANNED	✓ SUEDE/NUBUCK
✓ DRY-TANNED	✓ WATERPROOF

PROTECTION AND REPAIR

PROTECTION/REPAIR | TOE ARMOR™



95128 Brown

95129 Black

UNIT (6) 2 oz. containers

- Provides a layer of durable toe protection
- Environmentally friendly
- Easy clean up
- Cures in 24 hours

Made in **USA**



PROTECTION/REPAIR | TUFF TOE™



95133 Black

95134 Brown

UNIT (12) 1.7 fl. oz. containers

- Provides superior toe protection
- Bonds to almost any surface
- Five-minute set up
- Cures in 24 hours

Made in **USA**



PROTECTION/REPAIR | SHOE GOO®



95124

UNIT (12) 3.7 fl. oz. tubes

- Superior adhesive and sealant
- Easily and permanently repairs leather, vinyl, rubber, and canvas
- Dries to a waterproof, flexible rubber

Made in **USA**

PROTECTION/REPAIR | BOOT BUMPER™



95182 Black

95183 Dark Brown

95184 Tan

95185 Multi-pack display

UNIT (12 per case)

- One size fits all
- Designed to protect toe area
- Easy application with formulated glue

Made in **USA**



HEADWEAR

GLOVES | FOOTBEDS | SOCKS | CARE PRODUCTS | HEADWEAR | SLIPPERS | LEATHER GOODS | ADDITIONAL GEAR | RETAIL DISPLAYS | ORDERING | INDEX

HEADWEAR | WATCH CAPS

Made in **USA**



97438
Charcoal

97439
Lt Gray Heather

97440
Black

97441
Red Wing Red

FABRIC 100% acrylic rib-knit
Stretchable for warmth

PATCH Leather with debossed logo

SIZE One-size-fits-all

CARE Hand wash

UNIT 3 pack

HEADWEAR | WATCH CAP BEANIES

Made in **USA**



97442
Charcoal

97443
Lt Gray Heather

97444
Black

FABRIC 100% acrylic rib-knit
Stretchable for warmth

PATCH Black or white woven label

SIZE One-size-fits-all

CARE Hand wash

UNIT 3 pack

SLIPPERS

GLOVES

FOOTBEDS

SOCKS

CARE PRODUCTS

HEADWEAR

SLIPPERS

LEATHER GOODS

ADDITIONAL GEAR

RETAIL DISPLAYS

ORDERING

INDEX

MEN'S SLIPPERS

ALPINE II



97524: Chocolate

- 01 – **UPPER:** Leather
- 02 – **LINING:** 100% Sheepskin
Naturally wicks away moisture
Keeps feet warm
- 03 – **FOOTBED:** Removable
100% Sheepskin
- 04 – **SOLE:** Dual density rubber

SIZES M 8-16

Made in **China**

LOAFER MOCCASIN

97515: Chestnut, 97516: Chocolate

- UPPER** Cowhide suede leather
- LINING** 100% sheepskin
- FOOTBED** Removeable
- SOLE** Slip-resistant TPR rubber
- SIZES** 97515: M 8-16, W 10-14
97516: M 8-16



LOAFER MOCCASIN

97518: Chestnut

- UPPER** Cowhide suede leather
- LINING** Beige cotton terry cloth
- SOLE** Slip-resistant TPR rubber
- SIZES** M 8-16, W 10-14



Made in **China**

SCUFF

97519: Chestnut

- UPPER** Cowhide suede leather
- LINING** 100% sheepskin
- SOLE** Slip-resistant TPR rubber
- SIZES** SML, MED, LRG, XLG, XXL

Made in **China**



ROMEO TRI-PANEL

97517: Chestnut

- UPPER** Cowhide suede leather
- LINING** 100% sheepskin
- FOOTBED** Removeable
- SOLE** Slip-resistant TPR rubber
- SIZES** M 8-16, W 10-14

Made in **China**



WOMEN'S SLIPPERS

JULIET

97522: Chestnut
UPPER Cowhide suede leather
LINING 100% sheepskin with flip-up cuff
SOLE Slip-resistant TPR rubber
SIZES M 5-12

Made in **China**



SCUFF

97520: Chestnut
UPPER Cowhide suede leather
LINING 100% sheepskin
SOLE Slip-resistant TPR rubber
SIZES SML, MED, LRG, XLG, XXL

Made in **China**



BELLA

97527: Red **97525:** Black
97526: Taupe
UPPER Nubuck leather
LINING 100% sheepskin
SOLE Rubber sole
 Convenient for outdoor use
SIZES M 6-12

Made in **China**



SLIPPER SIZE CHART

SIZES	Small	Medium	Large	XLarge	XXLarge
MEN'S	7.5-8.5	9-10	10.5-11.5	12-13	14-15
WOMEN'S	5-6	6.5-7.5	8-9	9.5-10.5	11-12

LEATHER GOODS

GLOVES

FOOTBEDS

SOCKS

CARE PRODUCTS

HEADWEAR

SLIPPERS

LEATHER GOODS

ADDITIONAL GEAR

RETAIL DISPLAYS

ORDERING

INDEX

BELTS

BISON | 1 1/2" BISON BELT



96509: Brown

- LEATHER American raised and tanned bison
- CONSTRUCTION Two piece construction natural vegetable lining leather
- BUCKLE Zinc nickel and lead free end bar buckle
- FEATURES Tone-on-tone stitching
- SIZES 30"-44"

Made in **USA**

NUBUCK | 1 5/8" HARNESS



- 96558: Brown 96559: Black
- LEATHER Full-grain, oiled nubuck
- CONSTRUCTION Single-ply, flat
- BUCKLE Nickel roller bar/end bar
- SIZES 30"-44"

Made in **USA**

NUBUCK | 1 3/8" TRIPLE STITCH



- 96557: Black 96556: Brown
- LEATHER Full-grain, oiled nubuck
- CONSTRUCTION Flat with triple border stitching
- BUCKLE Eco-brass buckle end bar buckle in sterling silver plate finish
- SIZES 30"-44"

Made in **USA**

SINGLE-PLY HARNESS | 1 1/4" BASIC HARNESS



- 96505: Burgundy 96554: Brown
- 96555: Hardwoods
- 96504, 96519: Black
- LEATHER Full grain, single ply harness
- CONSTRUCTION Flat
- BUCKLE Eco brass end bar buckle
- SIZES 96505, 96554, 96504, 96555: 30"-44" 96519: 46"-52"

Made in **USA**

VEGETABLE TANNED | 1 1/2" AMERICAN EAGLE



- 96513: Brown
- LEATHER Natural vegetable tanned
- CONSTRUCTION Single-ply, flat
- BUCKLE Eco brass end bar buckle
- FEATURES American eagle embossing
- SIZES 30"-44"

Made in **USA**

BELTS

HORWEEN | 1 1/2" DISTRESSED



96510, 96534: Black
 96511, 96535: Brown

LEATHER Full-grain, oil-tanned from Horween

CONSTRUCTION Single-ply, flat

BUCKLE Eco brass end bar buckle

SIZES 96510 / 96511 30"-44"
 96534 / 96535 46"-54"

Made in **USA**

HORWEEN | 1 1/4" FEATHER EDGE



96512: Brown

LEATHER Full-grain, oil-tanned from Horween

CONSTRUCTION Feather edge

BUCKLE Eco brass end bar buckle
 Stitched down zinc buckle

SIZES 30"-42"

Made in **USA**

HORWEEN | 1 1/2" FLORAL WESTERN



96514: Brown

LEATHER Full-grain, oil-tanned from Horween

CONSTRUCTION Single-ply, flat

BUCKLE Eco brass end bar buckle in sterling silver plate finish

FEATURES Floral embossing

SIZES 30"-44"

Made in **USA**

HORWEEN | 1 1/2" DOUBLE PRONG



96529: Black 96530: Brown

LEATHER Full-grain, oil-tanned from Horween

CONSTRUCTION Single-ply, flat

BUCKLE Zinc double prong end bar buckle

SIZES 30"-44"

Made in **USA**

HORWEEN | 1 3/8" M1917 STRAP BELT



96517: Brown

LEATHER Full-grain, oil-tanned from Horween

CONSTRUCTION Single-ply, flat

BUCKLE Mechanics' belt, no buckle, double hook system
 Zinc nickel/lead free finish

SIZES 30"-44"

Made in **USA**

HORWEEN | 1 1/4" CLASSIC RANGER



96551: Brown

LEATHER Full-grain, oil-tanned from Horween

CONSTRUCTION Classic ranger treatment in F.E construction

BUCKLE Stitched-down eco brass end bar buckle in polished brass finish

SIZES 30"-44"

Made in **USA**

WALLETS AND CASES

BACK SAVER WALLET®



96585 Irish Red 96584 Black
96586 London Tan

LEATHER Full-grain, oil-tanned
from S.B. Foot Tanning Co.

CONSTRUCTION Front Pocket Wallet

FEATURES 60% thinner when full
Spring money clip keeps
cash secure and accessible
Made in U.S.A.
Debossed Red Wing logo

SIZES 4½" L x 2⅞" W

UNIT 6 pack

Made in **USA**

TPK's Back Saver Wallet® is recommended by the Congress of Chiropractic State Associations to help eliminate 'Wallet Sciatica'.

TRUCKER WALLET WITH CHAIN



96574: Brown

LEATHER Genuine aged bark

CONSTRUCTION Trucker construction
with stitching

FEATURES 13" polished nickel
chain with keeper
1 key slot - 5 card slots
Inside compartments
with zippered pouch

SIZES 7" L X 3½" W

UNIT 6 pack

Made in **China**

BUSINESS OR CREDIT CARD CASE



96572: Brown

LEATHER Genuine aged bark

CONSTRUCTION Card case

FEATURES Money clip on back
2 card slots

SIZES 4⅞" L x 2¾" W

UNIT 6 pack

Made in **China**

BI-FOLD WALLET



96570: Brown 96578: Black

LEATHER Genuine seidel cheyenne
Genuine aged bark

CONSTRUCTION Bi-Fold construction
with stitching

FEATURES 2 inside slots - 8 card slots
Divided compartment
for bills

SIZES 4½" L x 3½" W

UNIT 6 pack

Made in **China**

TRI-FOLD WALLET



96571: Brown 96579: Black

LEATHER Genuine aged bark
Genuine seidel cheyenne

CONSTRUCTION Tri-fold construction
with stitching

FEATURES 3 inside slots - 6 card slots
Divided compartment
for bills

SIZES 4⅞" L x 3⅝" W

UNIT 6 pack

Made in **China**

ADDITIONAL GEAR

Add the final layer of gear personalization with products optimized for safety and productivity in a variety of work environments.

SAFETY VESTS

HIGH VISIBILITY | STANDARD MESH SAFETY VEST



- 95102:** Orange **95103:** Lime
- FABRIC** Breathable ANSI-compliant polyester mesh fabric (3.3oz)
- MATERIAL** 2" ANSI-compliant reflective material
- POCKETS** Two outside front flap pockets
One inside pocket
- CLOSURE** Hook & loop front closure
- SIZES** S/M, L/XL, 2XL/3XL
- UNITS** Each

Made in **China**



Red Wing tag located on the back of vest

HIGH VISIBILITY | TWO-TONE MESH SAFETY VEST



- 95104:** Orange **95105:** Lime
- FABRIC** Breathable ANSI-compliant polyester mesh fabric (3.3oz)
- MATERIAL** 2" ANSI-compliant reflective material
Reflective material set on 4.5" contrasting color background
- POCKETS** One inside pocket
- CLOSURE** Zipper closure
- SIZES** S/M, L/XL, 2XL/3XL
- UNITS** Each

Made in **China**



Red Wing tag located on the back of vest



Gear will be more effective and comfortable if appropriate sizes are chosen.

VEST SIZE CHART

Vest Size	Small / Medium	Large / XLarge	2XLarge / 3XLarge
Chest Size	36-44in (91-112cm)	44-52in (112-132cm)	52-58in (132-147cm)



GLOVES

FOOTBEDS

SOCKS

CARE PRODUCTS

HEADWEAR

SLIPPERS

LEATHER GOODS

ADDITIONAL GEAR

RETAIL DISPLAYS

ORDERING

INDEX

SEE CLEARLY – AND SAFELY

SAFETY GLASSES

SAFETY GLASSES

Protective eyewear for all-day wear. Made of 100% durable polycarbonate. Lenses are finished with anti-scratch hard coating and added anti-fog advantage.

Made in **Taiwan**

STANDARDS Meets or exceeds ANZI Z87.1 standard
CE EN166 certificated
CE EN 166 N anti-fog (Clear/Tinted lens) and K anti-scratch requirements

LENSES Made from purity optical grade/Polycarbonate
Absorbs 99.9% harmful UV light
Curved lenses offer fit with unlimited wrap around protection

SAFETY GLASSES (LIGHT WEIGHT)



95212 CL: Clear

Incredibly lightweight, resilient and durable

FEATURES Featherlight - weighs only 16 grams
FIT Lightweight, flat temples are free from pressure
Universal-fit nose bridge

UNIT Dozen



95212 SK: Smoke



95212 AM: Amber



95212 IO: Cool I/O

SAFETY GLASSES (MEDIUM WEIGHT)



95213 CL: Clear

ADDITIONAL STANDARDS Meets or exceeds ballistic fragmentation impact standards per MIL PRF-32432, Clause 3.6.3

FIT 3-position frame width adjustment for customized fit
Flexible temples and rubber nosepiece for maximum comfort

UNIT Dozen



95213 SK: Smoke



95213 AM: Amber



95213 IO: Cool I/O

SAFETY GLASSES (HEAVY DUTY)



Adjustable elastic strap

95214 CL: Clear

FEATURES Strap or rubber tipped temples system options
Spectacle and goggle combination advantage
Fold-release hinge design allows users to change the temple/elastic band easily
No metal parts/non-conductive dielectric design help protect eyes from electric arcs
Removable foam gasket provides cushion fit and protects eyes from dust and debris

FIT Adjustable elastic strap provides tighter fit
Soft temple tip for slip proof / Soft nose pad for snug fit

UNIT Dozen



95214 SK: Smoke



95214 AM: Amber



95214 IO: Cool I/O



COOLING PRODUCTS

MICROFIBER COOLING TOWEL



95106: Blue / Gray

MATERIAL Soft, absorbent microfiber
FEATURES Super-evaporative, feels significantly colder than ambient air when wet
DIRECTIONS Dampen microfiber towel to activate cooling or use dry to wipe your brow.
DIMENSIONS 9.8" W x 40.9" L (25cm x 104cm)
CARE Chemical free
Machine washable
UNIT Each

Made in **China**

COOLING BANDANA



95108: Stars & Stripes 95109: Blue

MATERIAL Advanced PVA keeps you cool without the bulk.
FEATURES Reusable, just re-wet
Lightweight and low profile;
Perfect under hard hats
Tie closure for personal fit
DIRECTIONS Run under water for one minute. Activates easily.
DIMENSIONS 9.8" W x 40.9" L (25cm x 104cm)
CARE Machine washable
UNIT 6 pack

Made in **China**

MULTI-BAND



95107: Stars & Stripes

MATERIAL High-performance fabric.
FEATURES Anti-odor treatment
Multi-climate usage blocks wind, sun and dust
Stretchable and seam-free
Multi-use and -wear options
DIMENSIONS 9.8" W x 40.9" L (25cm x 104cm)
CARE Machine washable
UNIT Each

Made in **China**

COOLING TOWEL BAND



95112: Blue

MATERIAL Advanced PVA holds water without feeling heavy
FEATURES Super-evaporative, feels significantly colder than ambient air when wet
DIRECTIONS Dampen for cooling aid
Use as neck wrap by pulling end of wrap through slit
Simply re-wet to activate
DIMENSIONS 4" W x 29.5" L (10cm x 75cm)
CARE Machine washable
UNIT Each

Made in **China**

FOOD STORAGE

DELUXE LUNCH COOLER



95005

- 01 – MATERIAL: Durable soft-side insulated canvas

FEATURES:

- 02 – Fully insulated with zip closure
- 03 – Reinforced handle
- 04 – Additional zippered drink cooler
- 05 – Detachable 52" shoulder strap adjusts to the perfect length to carry over shoulder

DIMENSIONS: 15" L x 8" W x 9" H

UNIT: 6/case

Made in **China**



LUNCH COOLER



95004

- MATERIAL Durable soft-side insulated canvas
- FEATURES Detachable shoulder strap with adjustable length to carry over shoulder
- DIMENSIONS 11" L x 8" W x 9" H
- UNIT 6/case

Made in **China**

RED WING LEATHER COASTERS



95006

- MATERIAL S.B. Foot Tanning Co. leather
- FEATURES Four coasters tied together with golden taslan lace
Embossed Red Wing Shoes® logo
- DIMENSIONS 3½" diameter
- UNIT (12) 4-packs

Made in **USA**

SHOEHORNS

PRO-FITTER® SHOEHORNS



- 95188: Brushed Nickel
95189: Brushed Brass
- MATERIAL Premium steel with antique brushed finish
- FEATURES Embossed Red Wing Shoes® logo
- DIMENSIONS 7½" length
- UNIT 12/case

Made in **USA**

23-INCH SHOEHORN



95191

- MATERIAL Swedish, high-strength, lightweight metal
- FEATURES Screenprinted Red Wing Shoes® logo
Slides heel effortlessly into shoe without snagging socks
Extra length provides ease of use without bending
- DIMENSIONS 23" length
- UNIT 12/case

Made in **China**

MISCELLANEOUS

GLOVES

FOOTBEDS

SOCKS

CARE PRODUCTS

HEADWEAR

SLIPPERS

LEATHER GOODS

ADDITIONAL GEAR

RETAIL DISPLAYS

ORDERING

INDEX

RED WING YAKTRAX® WALKER



95190

Provides 360 degrees of traction on packed snow and iced conditions.

FEATURES Conforms to the shape of footwear
Can be worn in temps as low as -41°F

SIZES XSM (1-4½), SML (5-8½), MED (9-11), LRG (11½-13½)

UNIT 6 pack

Made in **China**

RED WING YAKTRAX® PRO



95192

Provides 360 degrees of traction on packed snow and iced conditions.

FEATURES Conforms to the shape of footwear
Over boot strap keeps the Yaktrax® PRO securely around footwear
Can be worn in temps as low as -41°F

SIZES SML (5-8½), MED (9-11), LRG (11½-13½), XLG (14+)

UNIT 6 pack

Made in **China**

RED WING PEET BOOT DRYER



95116

Safely removes perspiration, wetness and odor overnight from any footwear

FEATURES Silent thermal convection prevents damage to footwear
Cool air is pulled in through bottom vents and warmed - warm air rises naturally to circulate through footwear

UNIT 6 pack

Made in **USA**

SCRUSHER® WITH BASE



95123

Leaves dirt outdoors, not on your floors

FEATURES Sturdy base keeps the Scrusher in place when cleaning footwear
Rubber stops protect floors and prevent slipping
No assembly required

UNIT 4 pack

Made in **USA**

CREATE EXCEPTIONAL CUSTOMER EXPERIENCES.



IMPROVE SALES THROUGH MERCHANDISING

Strategic merchandising can help strengthen your store experience by adding order and simplicity to how customers interact with your offering. It also adds visual and emotional appeal to featured products. All of which encourages people to buy.

Help them shop the way they shop.

Few things are more frustrating than struggling to find what they need in a store. That's why grouping products in a logical manner is critical to keeping sales healthy and loyalty high.

Sometimes this grouping should go beyond similar products to tell a story instead. For example, in late summer, why not group

everything an outdoor worker will need to transition from warm to winter months?

Go vertical with your assortment.

By placing products in columns instead of rows, you can position more of your assortment in clear view — without having to hide anything along the bottom row. Going vertical also simplifies item comparisons while improving overall store appearance.

To make it as easy for you to capitalize on vertical merchandising, we have designed packaging for Red Wing® accessories with a consistent size and shape that arranges neatly in columns.

GLOVES

FOOTBEDS

SOCKS

CARE PRODUCTS

HEADWEAR

SLIPPERS

LEATHER GOODS

MISCELLANEOUS

RETAIL DISPLAYS

ORDERING

INDEX

VALUABLE TOOLS FOR MOVING

GET A CLEAR SHOW OF HANDS WITH THIS STYLE-SPECIFIC GLOVE DISPLAY.



GLOVE DISPLAYS

Master Pro Display	94319
Master Flex Display	94323
Master Grip Display	94324
Master Elite Display	94325
Thermal Flex Display	94335
Thermal Pro Display	94336
NEW Leather Pro Display	94333

Each style-specific glove display kit includes:

- One rotating hand form with glove sample
- One product feature card
- Five heavy-duty universal hooks (for peg panel or slatwall)
- One black backer-panel to enhance product visibility.
- 6" W x 77" H x 8.5" D

Display multiple glove styles side-by-side to create an attractive glove presentation, and make it easy for your customer to compare and select the purpose-built glove most appropriate for their work.

SAFETY EYEWEAR DISPLAY 94318

- Designed for a maximum capacity of 12 glasses.
- Includes options for free-standing, peg panel or slatwall display.

*Product not included.

The Safety Glasses Display includes twelve removable and repositionable arms, to merchandise one to twelve safety glass styles. The preferred location for merchandising this display is on the cashwrap. However if space is limited, remove the base, and add the universal brackets to hook into peg panel or slatwall.



Safety Glasses Display (free-standing)



Safety Glass Display (with slatwall clips)

MORE ACCESSORIES

ELEVATE EVERY INTERACTION WITH THE SPACE-SAVING PEG PANEL FIXTURE.

ROTATING PEG PANEL FIXTURE 94320

- Includes set of heavy-duty peg hooks
- Lazy susan base allows for display close to wall for stores with limited floor space.
- Size: 14" W x 14" D x 64" H



SMALL LEATHER GOODS 94348

- Designed to hold wallets and other leather accessory items.
- 14 retractable leathers included
- Size: 17" W x 10" D x 9" H

*Product not included.

Attach security tethers according to the included instruction sheet, or video (www.youtube.com/watch?v=Xl4ctb96e58)

Optional security tethers are included with Small Leather Goods Display (94348).

GLOVES

FOOTBEDS

SOCKS

CARE PRODUCTS

HEADWEAR

SLIPPERS

LEATHER GOODS

ADDITIONAL GEAR

RETAIL DISPLAYS

ORDERING

INDEX

MERCHANDISE RETURNS

DEFECTIVE MERCHANDISE:

Red Wing Brands of America, Inc. (“Red Wing”) accepts returns of defective merchandise. There is no prior authorization required. A return merchandise memo must accompany defective merchandise returns. The returned merchandise must be shipped prepaid and via the most economical means. Transportation credit will be issued on defective merchandise and prompt credit will be issued on returned merchandise deemed defective after inspection by Red Wing.

SHIPPING ERRORS:

Red Wing accepts returns on merchandise that is sent in error. The returned merchandise must be returned to Red Wing within 30 days of delivery. A return merchandise memo must accompany the returned merchandise along with a copy of the invoice or packing slip indicating the returned merchandise. Merchandise returned without a copy of the invoice or packing slip will be assessed a \$10 per order restocking fee. Merchandise not returned in the same condition as originally received will be assessed a \$10 per order reconditioning fee. The returned merchandise must be shipped prepaid and via the most economical means. Transportation credit will be issued on returned shipping errors and prompt credit will be issued.

ALL DEFECTIVE AND NEW MERCHANDISE MUST BE RETURNED TO: Red Wing Brands of America, Inc. | Attn: Returns | 135 Cannon River Ave. | Red Wing, MN 55066

SPECIAL ORDERS:

Special order merchandise may be returned within 45 days of delivery. A return merchandise memo must accompany the returned merchandise along with a copy of the invoice or packing slip indicating the returned special order merchandise. Merchandise returned without a copy of the invoice or packing slip will be assessed a \$10 per order restocking fee. Merchandise not returned in the same condition as originally received will be assessed a \$10 per order reconditioning fee. A \$10 re-stocking fee will be charged on all special orders returned after 45 days.

ALL OTHER RETURNS:

No other merchandise returns will be accepted without prior authorization from your Red Wing brand sales representative.

RED WING WARRANTY

LIMITED WARRANTY RELATING TO RED WING BRANDED PRODUCT

Red Wing branded products and footbeds bearing the “Red Wing” or “Red Wing Shoes” label are warranted against defects in workmanship and materials. If within 12 months of purchase, a defect occurs in a Red Wing branded product or footbed as the result of normal use, Red Wing will repair the defect or exchange the product. Product failures caused by excessive or abusive wear conditions do not qualify for exchange or purchase credit. This warranty is available only to the original purchaser and is not transferable. No adjustment will be given without the original receipt of purchase. You must return your product to the Red Wing Shoe dealer from which the product was purchased.

DISCLAIMER: The limited warranty relating to Red Wing branded product is in lieu of any other express warranty. No agent, employee or representative of Red Wing has any authority to bind Red Wing to any affirmation, representation or warranty concerning Red Wing branded products, except as stated herein. Red Wing shall not be liable for any consequential, incidental or punitive damages.

This limited product warranty gives you specific legal rights, and you may also have other rights that vary from state to state. Any implied warranties shall be effective for a period not exceeding 12 months from the date of purchase. Some states do not allow manufacturers to impose time limitations on certain implied warranties, so the above limitation may not apply to you.

RED WING SOCK LIFETIME WARRANTY

LIFETIME WARRANTY

Applies only to:

*Merino Safety Toe Crew and Qtr Crew on p. 13
Safety Toe Crew and Qtr Crew on p.17*

If not completely satisfied with the durability of this Red Wing sock, return it along with a proof of purchase for a replacement to:

Red Wing Shoe Company
Attn: Returns
135 Cannon River Ave.
Red Wing, MN 55066

CHANGE NOTICE

We have made every effort to make this catalog accurate. Due to improvement of product performance and availability of materials, there may be specification changes made during the year. Red Wing Brands of America, Inc. reserves the right to discontinue or drop products, sizes, widths or styles without prior notice. Policies, specifications and designs are subject to change without notice. For current warranty information, including return policies, please visit our website at: redwingshoes.com/red-wing-shoes-warranty.

RED WING DISTRIBUTION POLICY

It is the policy of Red Wing Brands of America, Inc. to sell its Red Wing branded products directly to selected retailers for resale at their approved outlets and only to end user customers. This policy prohibits the on-line sales of Red Wing branded products. This policy also prohibits resale or shipment of Red Wing branded products by a retailer to any other business or location, whether domestic or international that is not an authorized Red Wing branded account. Violation of this distribution policy may result in termination of a retailer’s right to sell Red Wing branded products.

ORDERING INFORMATION

Toll-Free: 1-800-328-9453
Email: customer.orders@redwingshoes.com

For all Canada customers:
Call Toll-Free: 1-800-471-8624

For all International customers:
Call: 651-388-8211

redwingshoes.com

TERM & CONDITIONS

1% 15 days. Net 30 days. 12% annual interest on past due accounts (1% per month). Prices are subject to change without notice.

PRODUCT INDEX

STYLE	DESCRIPTION	PAGE	STYLE	DESCRIPTION	PAGE	STYLE	DESCRIPTION	PAGE	STYLE	DESCRIPTION	PAGE
95004	Lunch Cooler	37	95182	Boot Bumper™ - Black	26	96513	1½" American Eagle	30	97289	Safety Toe Crew - Gray/Red	17
95005	Deluxe Lunch Cooler	37	95183	Boot Bumper™ - Dk Brown	26	96514	1½" Floral Western	31	97290	Work Thermal	18
95006	Red Wing Coasters (4 pack)	37	95184	Boot Bumper™ - Tan	26	96517	1¾" M1917 Strap	31	97291	Merino Safety Toe Qtr Crew - Black	12
95102	Mesh Safety Vest - Orange	33	95185	Boot Bumper™ - Multi Pack w/Display	26	96519	1¼" Basic Harness XL	30	97292	Merino Safety Toe Qtr Crew - Brown	12
95103	Mesh Safety Vest - Lime	33	95188	Pro Fitter® Shoe Horn, Brushed Nickel	37	96529	1½" Double Prong	31	97293	Merino Safety Toe Qtr Crew - Char/Olive	12
95104	Two-Tone Mesh Safety Vest - Org	33	95189	Pro Fitter® Shoe Horn, Brushed Brass	37	96530	1½" Double Prong	31	97294	Merino Safety Toe Crew - Char/Olive	12
95105	Two-Tone Mesh Safety Vest - Lime	33	95190	Yaktrax® Walker	38	96534	1½" Distressed XL	31	97297	Safety Toe Crew - Natural/Brown	17
95106	Microfiber Cooling Towel	36	95191	Swedish 23" Shoe Horn	37	96535	1½" Distressed XL	31	97298	Safety Toe Crew - Black	17
95107	Multi-Band	36	95192	Yaktrax® PRO	38	96551	1¼" Classic Ranger	31	97310	Moisture Wick Crew - Black	18
95108	Cooling Bandana - Stars & Stripes	36	95212 CL	Safety Glasses (Light Weight) Clear	35	96554	1¼" Basic Harness	30	97311	Moisture Wick Qtr Crew - Black	18
95109	Cooling Bandana - Blue	36	95212 SK	Safety Glasses (Light Weight) Smoke	35	96555	1¼" Hardwood Basic Harness	30	97312	Deluxe Wool Crew - Natural	14
95112	Cooling Towel Band	36	95212 AM	Safety Glasses (Light Weight) Amber	35	96556	1¾" Triple Stitch	30	97313	Deluxe Wool Crew - Black	14
95116	Red Wing/PEET Dryer (6 pack)	38	95212 IO	Safety Glasses (Light Weight) Cool I/O	35	96557	1¾" Triple Stitch	30	97315	Wick Dry Crew - Natural	19
95123	Red Wing Scrusher®	38	95213 CL	Safety Glasses (Med Weight) Clear	35	96558	1¾" Harness	30	97316	Wick Dry Quarter Crew - Natural	19
95124	ShoeGoo®	26	95213 SK	Safety Glasses (Med Weight) Smoke	35	96559	1¾" Harness	30	97317	Coolmax® Quarter	21
95127	Paste Wax - Black	25	95213 AM	Safety Glasses (Med Weight) Amber	35	96570	Brown Leather Bi-Fold	32	97320	ECP™ Merino - Charcoal	14
95128	Toe Armor™ Brown	26	95213 IO	Safety Glasses (Med Weight) Cool I/O	35	96571	Brown Leather Tri-Fold	32	97321	ECP™ Merino - Green	14
95129	Toe Armor™ Black	26	95214 CL	Safety Glasses (Heavy Duty) Clear	35	96572	Brown Leather Card Case	32	97325	Merino Medium Crew - Brown	14
95130	Boot Oil 8 oz.	24	95214 SK	Safety Glasses (Heavy Duty) Smoke	35	96574	Brown Leather Trucker w/Chain	32	97326	Merino Medium Crew - Olive	14
95131	Paste Wax - Brown	25	95214 AM	Safety Glasses (Heavy Duty) Amber	35	96578	Black Leather Bi-Fold	32	97327	Merino Medium Crew - Taupe	14
95132	All Natural Boot Oil	25	95214 IO	Safety Glasses (Heavy Duty) Cool I/O	35	96579	Black Leather Tri-Fold	32	97328	Merino Medium Crew - Navy	14
95133	Tuff Toe™ Black	26	95247	Master Flex Safety Glove	7	96584	Back Saver Wallet™ Black	32	97329	Merino Medium Crew - Charcoal	14
95134	Tuff Toe™ Brown	26	95248	Master Pro Safety Glove	7	96585	Back Saver Wallet™ Irish Red	32	97352	Merino Light Crew - Brown	14
95136	Saddle Soap Paste 3 oz.	23	95251	Master Grip Safety Glove	7	96586	Back Saver Wallet™ London Tan	32	97353	Merino Light Crew - Navy	14
95137	Boot Oil .24 oz. Pouch	24	95249	Master Elite Safety Glove	7	97200	Arctic	15	97354	Merino Light Crew - Charcoal	14
95138	Mink Oil Paste .24 oz. Pouch	24	95253	Thermal Flex Safety Glove	6	97204	Safety Toe Quarter Crew - Gray/Red	17	97355	Narrow Rib Hiker - Charcoal	14
95139	Leather Cleaner 3 oz.	23	95255	Thermal Pro Safety Glove	6	97206	Safety Toe Quarter Crew - Nat/Brn	17	97356	Trail Ankle - Natural/Charcoal	15
95144	NaturSeal™ 4 oz. Liquid	24	95257	Leather Pro	5	97208	Climate Control Cold - Gray	18	97357	Trail Quarter - Natural/Charcoal	15
95145	NaturSeal™ 4 oz. Paste	24	96322	Total Contact	10	97220	Duo Therm	15	97392	Classic Merino - Burgundy	15
95146	One Gallon of NaturSeal™	24	96323	RW Revolution by Powerstep	8	97222	Dri-Foot	19	97438	Watch Cap - Charcoal	27
95147	NaturSeal™ Liquid 8 oz.	24	96324	Polyurethane	11	97224	Eagle Polywick - Grey	19	97439	Watch Cap - Lt Gray Heather	27
95148	NaturSeal™ Paste 8 oz.	24	96325	King Toe®	11	97230	Ultimate Diabetic - White	21	97440	Watch Cap - Black	27
95150	One Gallon Boot Oil	24	96326	Polyurethane SD	11	97231	Safety Toe Quarter Crew - Black	17	97441	Watch Cap - Red Wing Red	27
95151	Boot Oil 32 oz.	24	96327	Flat Comfort	10	97232	Ultimate Diabetic - Black	21	97442	Watch Cap Beanie - Charcoal	27
95152	Boot Oil Can w/Brush	24	96334	Orthotic EVA Sport	9	97247	Wick Dry Coolmax® Liner White	21	97443	Watch Cap Beanie - Lt Gray Heather	27
95153	NaturSeal™ Can w/Brush	24	96335	Orthotic Multicork Walker	9	97259	Performance Work Quarter Crew	16	97444	Watch Cap Beanie - Black	27
95154	Boot Paste 3 oz.	24	96336	Powerstep® Wide Fit Revolution	8	97261	Cotton Work Low Cut - White	20	97515	Men's Loafer Moccasin	28
95157	Mink Oil Paste 32 oz.	24	96339	Eagle	11	97262	Cotton Work Low Cut - Black	20	97516	Men's Loafer Moccasin	28
95160	Mink Oil Paste 3 oz.	24	96347	Eagle King Toe®	11	97263	Cotton Work Qtr Crew - White	20	97517	Men's Romeo Tri Panel	28
95162	Leather Protector 4 oz.	26	96358	King Toe® ADC Footbed	10	97264	Cotton Work Qtr Crew - Black	20	97518	Men's Loafer Moccasin	28
95164	Polish Brush	25	96365	Memory Foam ComfortForce®	9	97265	Cotton Work Crew - White	20	97519	Men's Scuff	28
95165	Polish Dauber	25	96368	ComfortForce® (Loden Green)	10	97266	Cotton Work Crew - Black	20	97520	Women's Scuff	29
95166	Suede/NuBuck Cleaner Bar Kit	23	96369	ComfortForce® (Burnt Sienna)	10	97267	Performance Work Crew	16	97522	Women's Juliet	29
95167	All Natural Boot Paste 3 oz.	25	96381	FoamTech™ SD	11	97268	Cotton Work Crew - White Bulk Pk	20	97524	Men's Alpine II	28
95170	Shoe Polish, Black	25	96386	Custom Comfort Moldable by Sole	8	97269	Cotton Work Crew - Black Bulk Pk	20	97525	Women's Bella	29
95171	Shoe Polish, Dusky Brown	25	96388	RedBed™	10	97273	Cotton Work Over-the-Calf - Black	20	97526	Women's Bella	29
95172	Shoe Polish, Medium Brown	25	96504	1¼" Basic Harness	30	97274	Cotton Work Over-the-Calf - White	20	97527	Women's Bella	29
95174	Shoe Polish, Burgundy	25	96505	1¼" Basic Harness	30	97275	Merino Wool Casual - Black	14			
95177	Shoe Polish, Neutral	25	96509	1¾" Pebble Grain Bison	30	97277	Merino Wool Casual - Brown	14			
95178	Shoe Polish, Brown	25	96510	1¾" Distressed	31	97278	Merino Wool Casual - Charcoal	14			
95179	Shoe Polish, Red Mahogany	25	96511	1¾" Distressed	31	97286	Merino Safety Toe Crew - Black	12			
95181	Shoe Polish, London Tan	25	96512	1¾" Feather Edge	31	97287	Merino Safety Toe Crew - Brown	12			

GLOVES

FOOTBEDS

SOCKS

CARE PRODUCTS

HEADWEAR

SLEPPERS

LEATHER GOODS

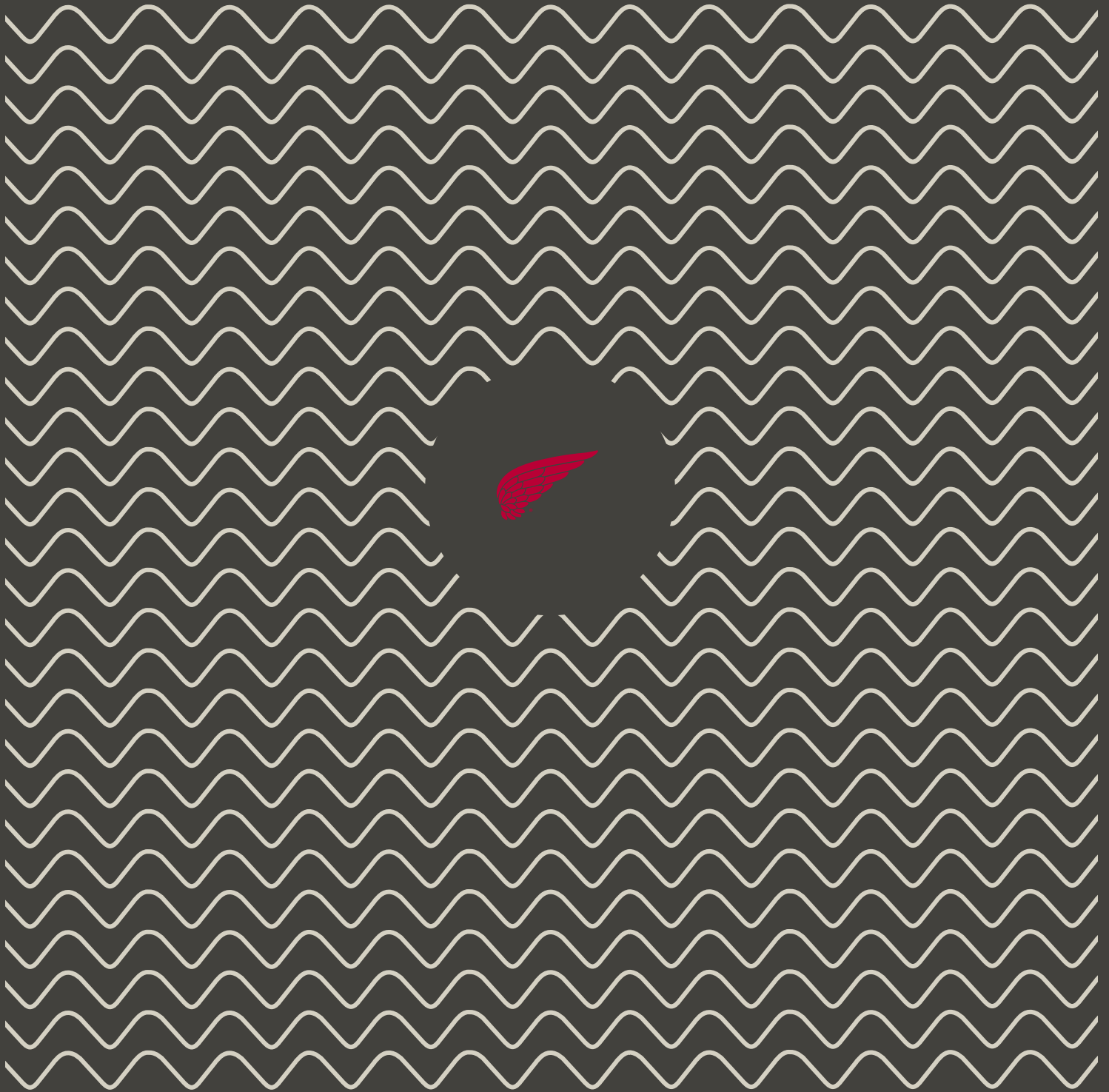
ADDITIONAL GEAR

RETAIL DISPLAYS

ORDERING

INDEX

2018 ACCESSORIES CATALOG



RED WING SHOES®

RED WING SHOE COMPANY, INC.
314 MAIN STREET RED WING MINN.
1-800-328-9453

REDWINGSHOES.COM
CUSTOMER.ORDERS@REDWINGSHOES.COM
CANADA ORDERS: 800-471-8624

